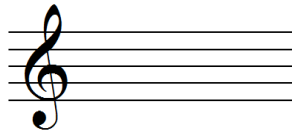


Name \_\_\_\_\_

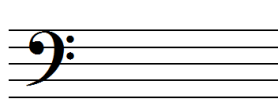
Teacher \_\_\_\_\_

Score \_\_\_\_\_

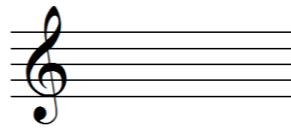
**1. KEY SIGNATURES: Write the correct key signature.**



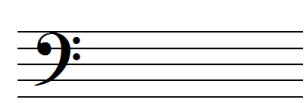
F# Minor



C# Major

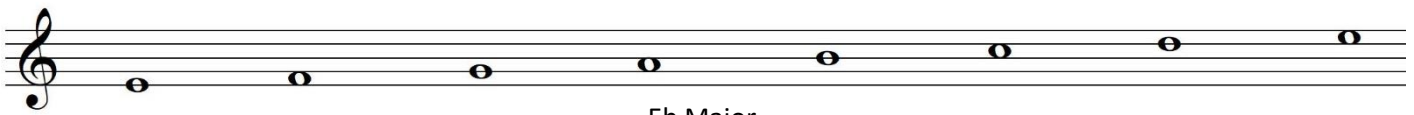


Ab Major



C# Minor

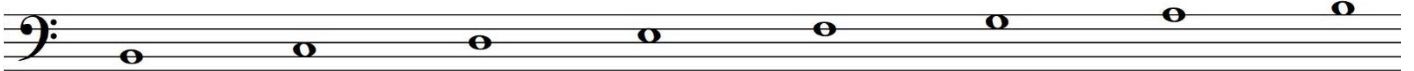
**2. Scales: Add sharps, flats or naturals to complete each scale. DO NOT use key signatures. Accidentals must be on the correct line or space.**



Eb Major



B Harmonic Minor



B Major



D Harmonic Minor

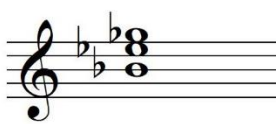
**3. CHORDS: Identify each chord by root name, quality, and inversion. Ex: C minor 1<sup>st</sup> inversion**



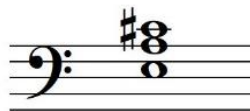
\_\_\_\_\_



\_\_\_\_\_



\_\_\_\_\_

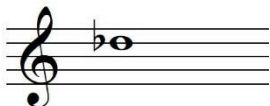


\_\_\_\_\_

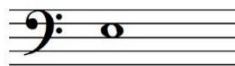


\_\_\_\_\_

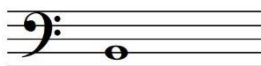
**4. INTERVALS: Write the note ABOVE the given note, as indicated, to complete the requested interval. DO NOT change the given note.**



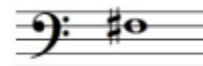
Perfect 4th



Minor 6th



Perfect 5th



Major 3rd



Minor 7th

**5. TIME SIGNATURES:** Add the bar lines in the correct locations and a double bar at the end. The first bar-line will be given in the case of an incomplete measure.

**6. DEFINITIONS:** Number the Terms or Symbols to match the correct definition.

- |                        |   |
|------------------------|---|
| _____ Scherzando       | 1. In a singing style                             |
| _____ Dolce            | 2. Sweetly  |
| _____ Maestoso         | 3. Return to the sign                             |
| _____ Subito           | 4. To emphasize; make clear                       |
| _____ Con brio         | 5. Suddenly                                       |
| _____ Dal Segno (D.S.) | 6. Majestic                                       |
| _____ Marcato          | 7. Playful  |
| _____ Cantabile        | 8. Close or ending of phrase, section or movement |
| _____ Cadence          | 9. Without  |
| _____ Senza            | 10. With spirit                                   |

**7. Number the musical period to match the correct composer.**

- |                    |              |
|--------------------|--------------|
| _____ Contemporary | 1. Dussek    |
| _____ Romantic     | 2. Scarlatti |
| _____ Baroque      | 3. Faure     |
| _____ Classical    | 4. Bartok    |

**8. MUSICAL PERIODS:** Write the period dates.

Classical \_\_\_\_\_

Contemporary \_\_\_\_\_

Romantic \_\_\_\_\_

Baroque \_\_\_\_\_